

State of Wyoming Corner Record

(In compliance with the *CORNER PERPETUATION AND FILING ACT*, Wyoming Statutes, 1997, Section 33-29-140, et seq., and the Rules and Regulations of the Board of Registration for Professional Engineers and Professional Land Surveyors)

Reverse side of this form may be used if more space is needed.

Record of original survey and citation of source of historical information (if corner is lost or obliterated). Description of corner monumentation evidence found and/or monument and accessories established to perpetuate the location of this corner. Sketch of relative location of monument, accessories, and reference points with course and distance to adjacent corner(s) (if determined in this survey). Method and rationale for reestablishment of lost or obliterated corner.

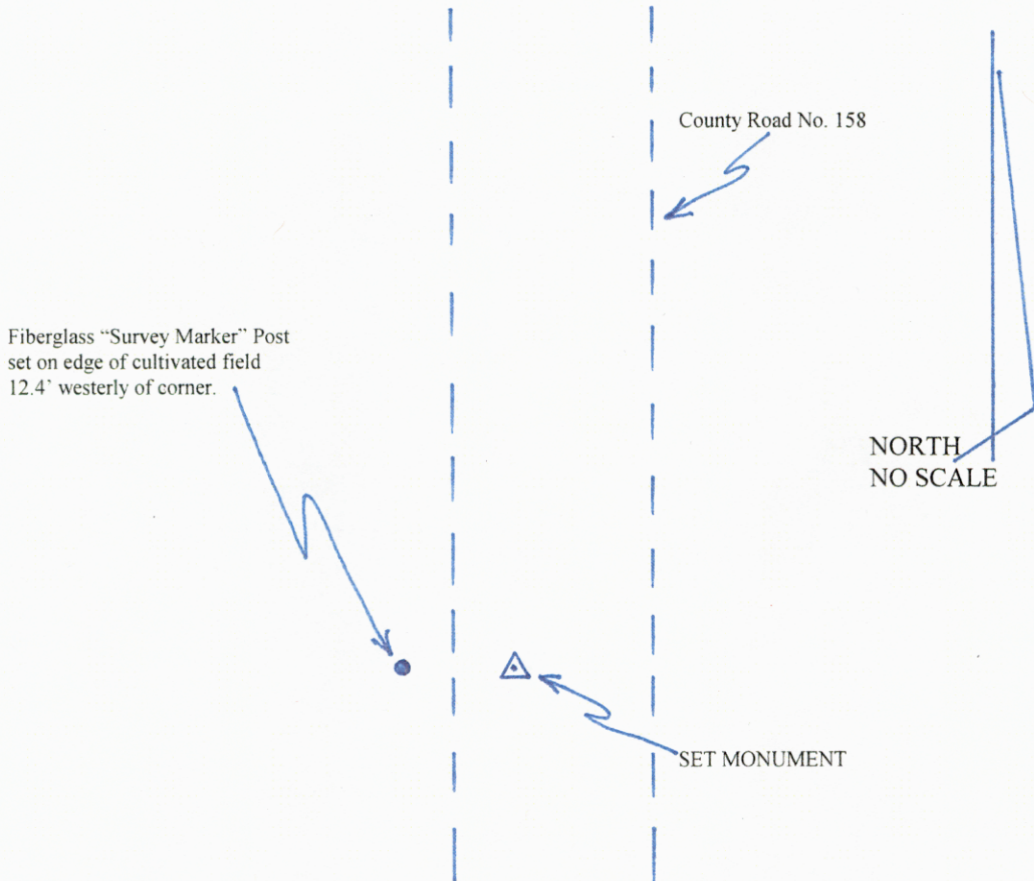
Quarter Corner: 10/11 T12N, R61W, 6th PM, Laramie County, Wyoming.

GLO record: 10"x10"x5" Sand Stone marked ¼ on W. Side.

Found: Nothing found.

Set: 30" No.5 rebar w/2 ½" dia. Aluminum Survey Cap, stamped PLS 4828 and proper identification.

This corner was reestablished online, midway between the reestablished corners for the NE and SE Corners of said Section 10. Monument set in Laramie County Road No. 158, 1' below gravel road surface. A fiberglass "SURVEY MARKER" post was set 12.4' westerly of the corner on the easterly edge of a cultivated field.



SEE MAP ON BACK OF THIS PAGE FOR TIES TO SURROUNDING CORNERS.



RECORDED 9/03/2013 AT 9:58 AM REC# 623222 BK# 2356 PG# 678
 DEBRA K. LATHROP, CLERK OF LARAMIE COUNTY, WY PAGE 1 OF 2

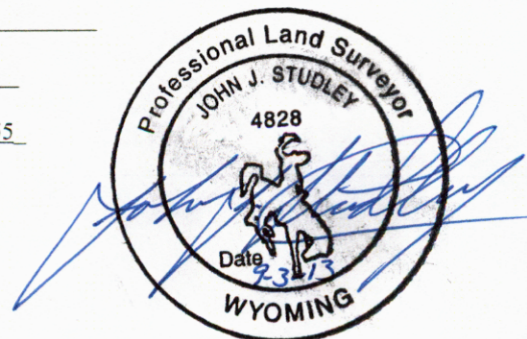
Date of Field Work: JULY 2013 Office Reference: _____

CROSS INDEX DIAGRAM

	1	2	3	4	5	6	7	8	9	10	11	12	13	14	15	16	17	18	19	20	21	22	23	24	25
A																									
B																									
C		6			5				4					3					2						1
D																									
E																									
F																									
G			7			8			9					10					11						12
H																									
J																									
K																									
L			18			17			16					15					14						13
M																									
N																									
O																									
P			19			20			21					22					23						24
Q																									
R																									
S																									
T			30			29			28					27					26						25
U																									
V																									
W																									
X			31			32			33					34					35						36
Y																									
Z																									
	1	2	3	4	5	6	7	8	9	10	11	12	13	14	15	16	17	18	19	20	21	22	23	24	25

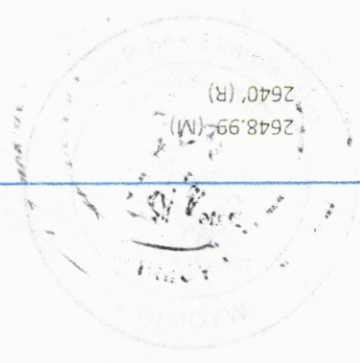
Land Surveyor / Firm / Address
Studley Land Surveying, PC
John J. Studley, PLS No. 4828
615 West Dale Blvd.
Cheyenne, WY 82009
 Telephone: 307-287-4755

This corner record was prepared by me or under my direction and supervision.
 SEAL & SIGNATURE





RECORDED 9/03/2013 AT 9:58 AM REC# 623222 BK# 2356 PG# 678 A
 DEBRA K. LATHROP, CLERK OF LARAMIE COUNTY, WY PAGE 2 OF 2



C/L
 COUNTY ROAD 155

COUNTY ROAD 158